

POWERCUTTERS

Cutting and Pressing



..... Cutting here will cause damage to the blade!

..... Caution
Only cut your piece of work in this area of the blade.
Do not twist the tool when cutting!

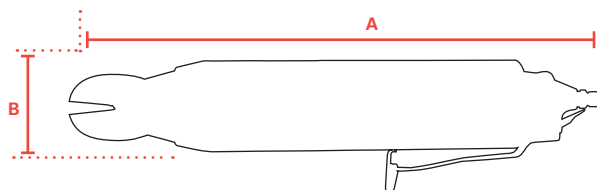


| Type | Brand | Capacity copper mm | Capacity steel* mm | Capacity plastics mm | Capacity crimping mm | Power midway on blade kg | Air cons. l/stroke | Weight kg** | Inlet thread | Hose diameter mm | Vibration m/s ² | Sound level dB(A) |
|----------|-------|--------------------|--------------------|----------------------|----------------------|--------------------------|--------------------|-------------|--------------|------------------|----------------------------|-------------------|
| RRI-8002 | RRI | 1 | 0,5 | - | - | 40 | 0,064 | 0,13 | PT 1/4" | 6,5 | 0,2 | 71 |
| RRI-8003 | RRI | 1,6 | 1 | 4 | - | 60 | 0,116 | 0,20 | PT 1/4" | 6,5 | 0,4 | 72 |
| RRI-8004 | RRI | 2,6 | 2 | 7 | - | 140 | 0,23 | 0,34 | PT 1/4" | 6,5 | 0,3 | 73 |
| RRI-8011 | RRI | 3,3 | 2,8 | 10 | 2 | 280 | 0,584 | 0,52 | PT 1/4" | 6,5 | 1 | 76 |
| RRI-8031 | RRI | 4,8 | 4 | 13 | 5,5 | 450 | 0,956 | 0,83 | PT 1/4" | 6,5 | 1 | 75 |
| RRI-8032 | RRI | 7 | 6 | - | - | 790 | 2,7 | 2 | PT 1/4" | 6,5 | 1,5 | 78 |

* Steel FE 370 / **Without blades (power cutters are supplied without blade, for blades see the next page) / Working pressure 0,4-0,5 MPa

DIMENSIONS

| Type | A mm | B mm |
|----------|------|------|
| RRI-8002 | 30 | 104 |
| RRI-8003 | 36 | 124 |
| RRI-8004 | 45 | 156 |
| RRI-8011 | 56 | 192 |
| RRI-8031 | 56 | 280 |
| RRI-8032 | 75 | 390 |



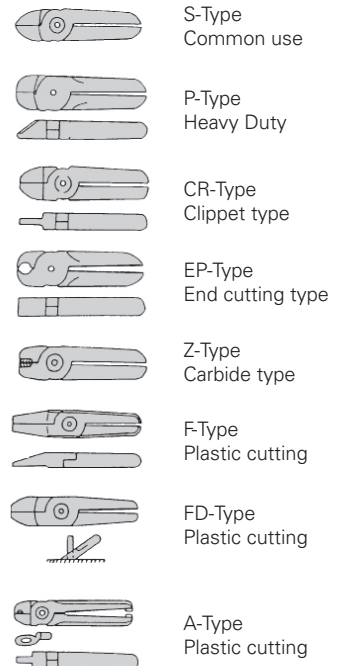
POWERCUTTERS

Accessories: Blades



CUTTING CAPACITY OF THE BLADES

| Type | Copper mm | steel FE 370 mm | Piano-wire mm | Plastics mm | Crimping mm | Blade type |
|----------|-----------|-----------------|---------------|-------------|-------------|-----------------------------------|
| RRI-8002 | 1 | 0,5 | - | - | - | S-26 |
| RRI-8003 | 1,6 | 1 | - | - | - | S-4 |
| | 1,6 | 1 | 0,5 | - | - | Z-4 |
| | - | - | - | 4 | - | F-3 |
| RRI-8004 | 2,6 | 2 | - | - | - | P-6, CR-6, EP-6, S-5 |
| | 2,6 | 2 | 1 | - | - | Z-6 (carbide tip) |
| | - | - | - | 7 | - | F-5, FD-5 |
| RRI-8011 | 3,3 | 2,8 | - | - | - | P-8P, CR-8P, EP-10P, S-7P |
| | 3,3 | 2,8 | 1,2 | - | - | Z-8P (carbide tip), ZCR-8P |
| | - | - | - | 10 | - | F-9P, FD-9P |
| | - | - | - | - | 2 | A-8P |
| RRI-8031 | 4,8 | 4 | - | - | - | P-8P, ZCR-8P, CR-8P, EP-10P, S-7P |
| | - | - | - | 13 | - | F-9P, FD-9P |
| | - | - | - | - | 5,5 | A-8P |
| RRI-8032 | 7 | 6 | - | - | - | P-120R23, CR-120 |



Power cutters are supplied without blade, please order separately from the list above.